

# Corporate Brochure & Profile 2018

# UCHINO SEIKO

## UCHINOSEIKO Co.,Ltd.



Management  
System  
ISO 9001:2015



[www.tuv.com](http://www.tuv.com)  
ID 9105046243

April, 2018

# About UCHINOSEIKO Co.,Ltd.

## <Profile>

Founded in : March, 1957

Capital : ¥90 million yen ( €678,600 )

Employees : 80 (Total, include part-timers)  
(Head Office 10 , Nagaoka Factory 70)

## <Main Business Area>

- ① Precision Cutting and Grinding of Metal and Resin Parts, and Wire-cut Electrical Discharge Machining of Metal Parts for Industrial Machineries including Optical Equipment
- ② Assembly of Industrial and Medical Parts

# Corporate History

- 1957 Founded. Started precision machining of camera and typewriter parts.
- 1972 Established UCHINOSEIKO Limited. Grew from private industry to corporate enterprise.
- 1979 NC lathe installed. Since the expansion of machining center facility etc., it increase processing accuracy and production capacity.
- 1981 New Head Office(RC-structures,3 floors,total area 600 m<sup>2</sup>) was newly constructed to promote modernization of factory and work environment.
- 1989 Changed company organization to stock corporation. Production control was computerized.
- 1992 The Nagaoka Factory was newly established (600 m<sup>2</sup>, site area 1650 m<sup>2</sup>), the operation of Murayama Factory was consolidated in Nagaoka Factory.
- 1996 Nagaoka Factory expanded (600 m<sup>2</sup> , two-storey) .
- 2002 ISO 9001:2000 certification .
- 2003 Installation of MC 5 axis processing machine.
- 2006 Capital increased to 30 million yen.  
Installation of 3D CAD/CAM.
- 2007 New Nagaoka 2nd Factory ( 400 m<sup>2</sup>, site area 2000m<sup>2</sup>) .
- 2009 Capital increased to 50 million yen.
- 2013 Addition of wire electric discharge machine (total 5 units : made by DMG MORI ).
- 2014 Capital increased to 90 million yen. New Nagaoka 3rd Factory (800m<sup>2</sup>).
- 2015 Installation of MX520(made by Matsuura Machinery Corporation), CAD/CAM for coaxial 5 axis machining. Introducing New Production,Process Control & Sales Management System.
- 2016 New assembly room for medical equipment. Introduction of Pure water specifications ultrasonic washing machine. Addition of 3D measuring machine.
- 2017 ISO9001:2015 certification. Installation of Small hole electric discharge machine and Laser marking.



## Feature 1

### <Microfabrication technology for medical equipment>

- We have delivered processed parts for medical equipment for more than 20 years.

"If it's a palm-sized one, we will process any material"

- We are good at microfabrication of various materials regardless of metal and nonferrous metals such as SUS, titanium alloy (6-4 titanium), magnesium, resin with glass (noryl, radel, ultem).



# Material processing record

Metal				Non ferrous metal				
General structural material	Free cutting steel	Free hand steel	Stainless	Copper alloy	Aluminum	Resin	Titanium	others
SS400	SUM23	NAK55	SUS303	C1020	A1070	MC501	JIS Type2	Mg round bar
SGD41	SUM24	NAK80	SUS303TP	C1100	A2011	MC901	JIS Type4	
SPCC	SUM24L	DH2F	SUS303Cu	C2700	A2014	PA66	JIS Type60	Mg die casting
Carbon steel	ASK2600	F-DAC	SUS304	C2801	A2017	PBT	JIS Type61	
	ASK2600S	SENA1	SUS304F	C3561	A2052	PBT-GF30	DAT5	Mc
S20C	ASK3000		SUS304SE	C3604	A5056	PC		ZDC
S25C	ASK3200		SUS304T	C3710	A5083	PEEK		tungsten
S45C	KFS201-D		SUS304TP	C4622	A6061	PEEK450CA		zinc
S50C			SUS316	C5191	A6063	PEI GF40		ebony
			SUS316L	C5210	A7075	PEI Ultem		paper phenol
Carbon steel pipe	Tool steel	Chrome molybdenum steel	SMS316L	C5341	CB156	PAI		nickel silver
	SK3		SUS403	C5441	GT-209	POM		
STKM13A	SK4		SUS410	C6191	ADC10	POM-HL		
STKM16A	SKS3	SCM415	SUS416		ADC12	Pomalux		
STKM17A	YK30	SCM435	SUS420 F			PPE GF20		
	SKD11	SCM440	SUS420J2			PPS(W540)		
	SLD-MAGIC	SNCM439	SUS430F			PPS(Fortron)		
			SUS440C			PPS-GF40		
Mouse cast iron	SKD61		SUS630			PPSF Radel		
	SKH51		SUY			PTFE		
FC250	PD613		SF30V-G			PVC94V		
	Bearing steel					PMMA acrylic		
Piano wire								
SWP-A	SUJ2							GFRP

December 1,2013

## Feature 2

### <Lower cost through complex lathe machining>

- Low cost can be realized by processing from  $\phi 1$  to  $\phi 90$  from a round bar with complex lathes.



- Head Office is a prototype factory,  
Nagaoka Factory operates 24 hours a day and can make  
also trial production and mass production.



# Head Office

prototype factory



## Head Office

3-27-9, Kita, Kunitachi-shi,  
Tokyo, 1860001, JAPAN



Headquarters

# Nagaoka Factory

Mass-production operates 24 hours



1st factory



Nagaoka Factory

50-5 Isurugi Minami-machi, Nagaoka-shi,  
Niigata, 9402117, JAPAN



2nd factory



Assembly room



## Feature 3

### **<Abundant equipment and assembly , One-stop production in cooperation with partner companies>**

- Various equipment: Complex lathe, Machining, NC wire-cut electric discharge machine, Surface grinder, Cylindrical grinding machine, Heat treatment furnace, Barrel machine, Three-dimensional measuring instrument, CAD/CAM, . . . etc.  
NC Machine tools : Holds 110 units or more
- Complete assembly room that controls temperature and humidity  
We are building integrated production system until assembly.
- We have established a one-stop system in cooperation with various cooperating companies such as various surface treatment, die casting, lost wax, brazing, gear processing, gun drill processing.

# Major machinery equipment①

CNC Lathe & Turning Center	Location	Number
NC compound automatic lathe (Φ 90 penetration)	Nagaoka	2
NC compound automatic lathe (Φ 80 penetration)	Nagaoka	2
NC compound automatic lathe (Φ 70 penetration)	Nagaoka	14
NC compound automatic lathe (Φ 45 penetration)	Headoffice/ Nagaoka	26
	Sub total	44
CNC Precision Automatic Lathe	Location	Number
NC compound automatic lathe (Φ32:2 units , Φ26:2 units , with sub spindle)	Nagaoka	4
NC compound automatic lathe (Φ20 , with sub spindle , with B axis)	Nagaoka	2
NC compound automatic lathe (Φ16:6 units , Φ12:1 unit , with sub spindle)	Nagaoka	9
NC compound automatic lathe (Φ16:3 units)	Nagaoka	3
	Sub total	18
NC lathe	Location	Number
Comb cutting type NC lathe Include 3 units:with loader , 1 units:spherical processing machine	Nagaoka	18
<b>Lathe system</b>	<b>total</b>	<b>80</b>



As of September 2017

# Major machinery equipment②

Machining center	Location	Number
5 axis machining center (Including simultaneous 5 axes)	Headoffice /Nagaoka	8
Machining center With circular	Headoffice /Nagaoka	7
Machining center 2 pallet specification	Headoffice /Nagaoka	2
Other machining center	Headoffice /Nagaoka	9
	total	26



Electric discharge machine	Location	Number
NC Wire Electric Discharge Machine (Applicable up to $\Phi$ 600)	Headoffice /Nagaoka	5
Small hole electric discharge machine	Headoffice	1



# Major machinery equipment③

Grinding machine · general purpose	Location	Number
Surface grinding machine	Headoffice/ Nagaoka	4
Cylindrical grinding machine	Nagaoka	1
Universal tool grinder	Nagaoka	1
Carbide tool grinding machine	Nagaoka	2
Screw rolling machine	Nagaoka	1
Knurling machine	Nagaoka	1
Vertical and horizontal compound milling	Headoffice/ Nagaoka	7
Hydraulic automatic milling	Nagaoka	1



# Major machinery equipment ④

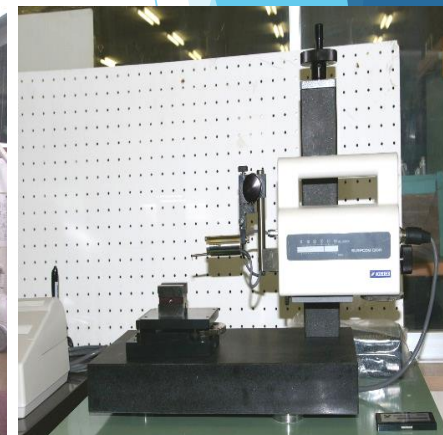
Other machine	Location	Number
Centrifugal barrel machine	Headoffice/ Nagaoka	2
Sandblast machine	Nagaoka	2
Buff machine		1
Ultrasonic cleaning machine(Including pure water specification)	Headoffice/ Nagaoka	3
Electrolytic deburring machine	Nagaoka	1
Annealing furnace	Nagaoka	2
Laser marker (YAG)	Nagaoka	1
3D printer	Headoffice/ Nagaoka	2
General-purpose machine	Location	Number
Hydraulic desktop lathe / drilling machine	Headoffice/ Nagaoka	13
General-purpose lathe	Headoffice/ Nagaoka	2
Contour machine	Headoffice	1



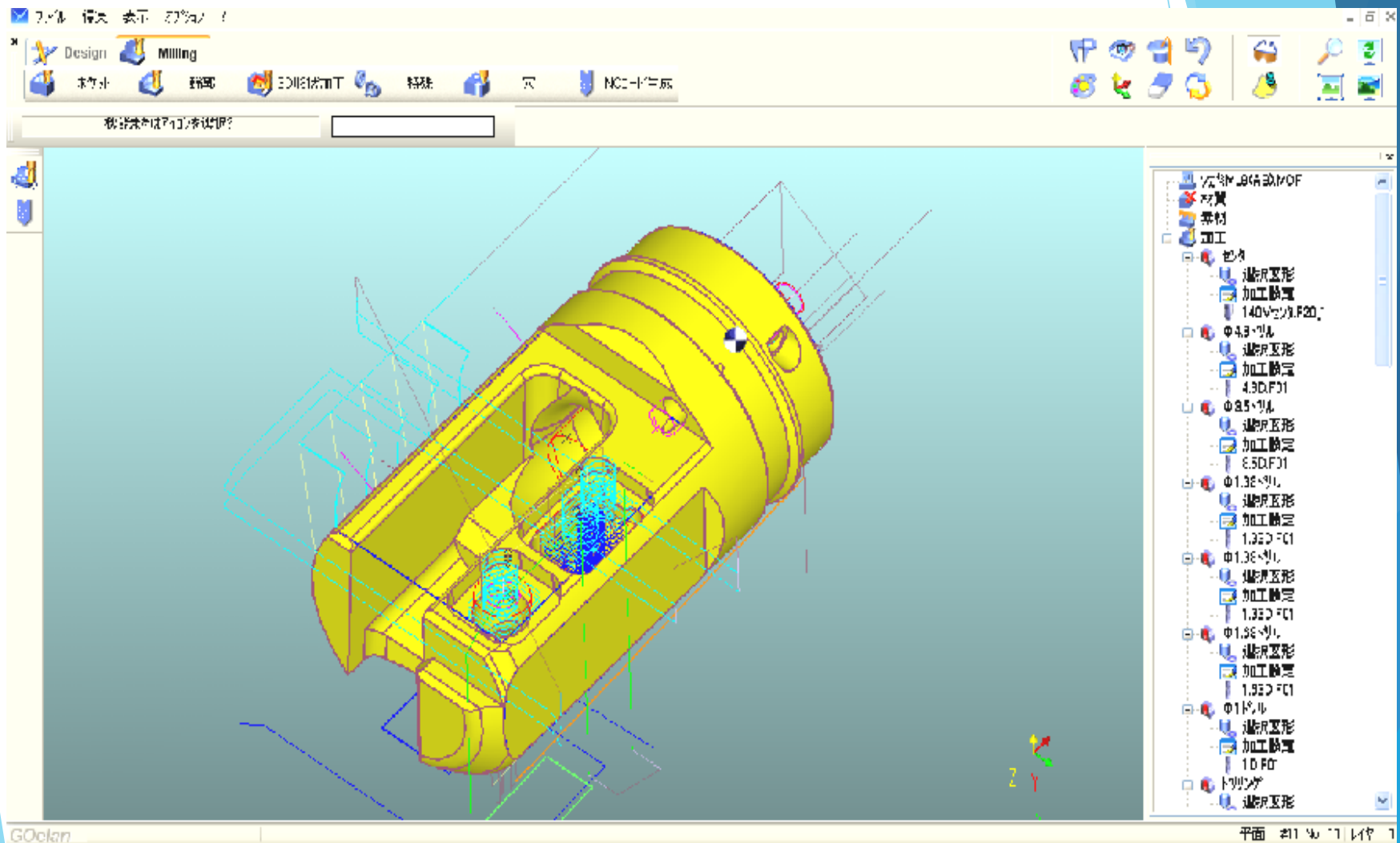


# Main measuring equipment

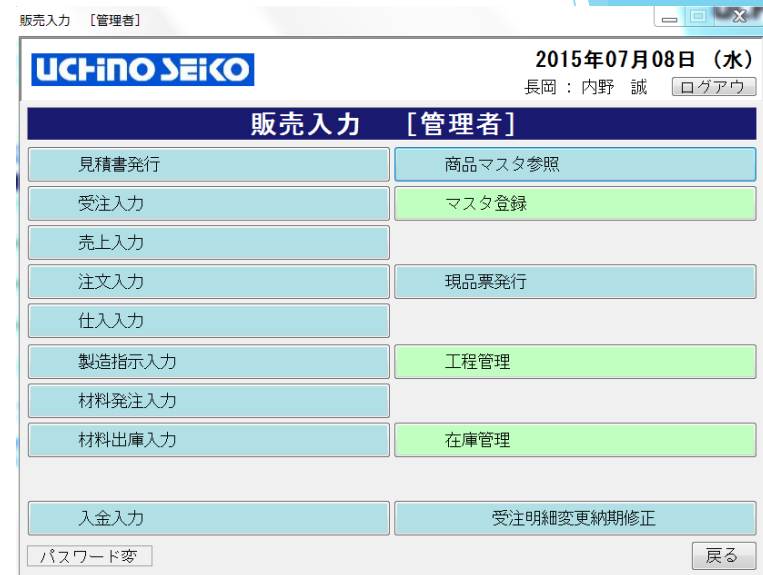
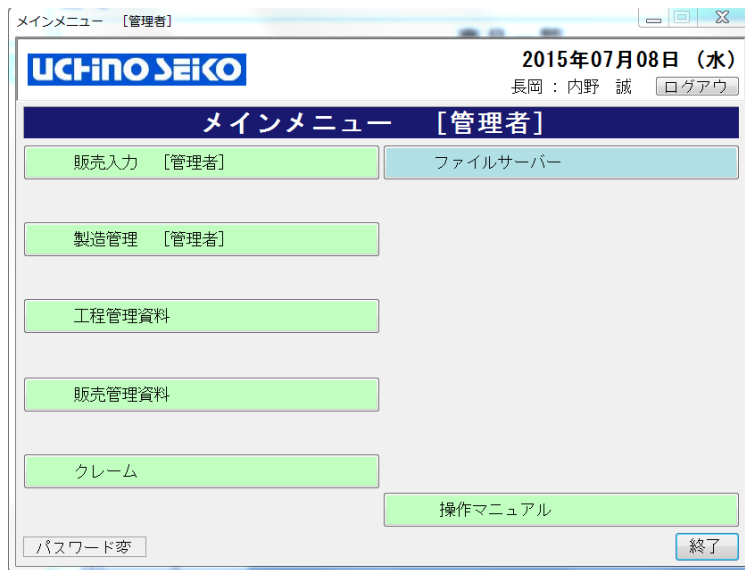
Measuring instrument	Location	Number
3D measuring machine	Nagaoka	2
CNC image processing apparatus	Headoffice/ Nagaoka	5
Circularity measuring instrument	Nagaoka	1
Surface roughness	Headoffice/ Nagaoka	2
Laser scan micro	Nagaoka	1
Image size measuring instrument	Headoffice	1
Tool microscope	Headoffice/ Nagaoka	7
Torque tester	Nagaoka	1



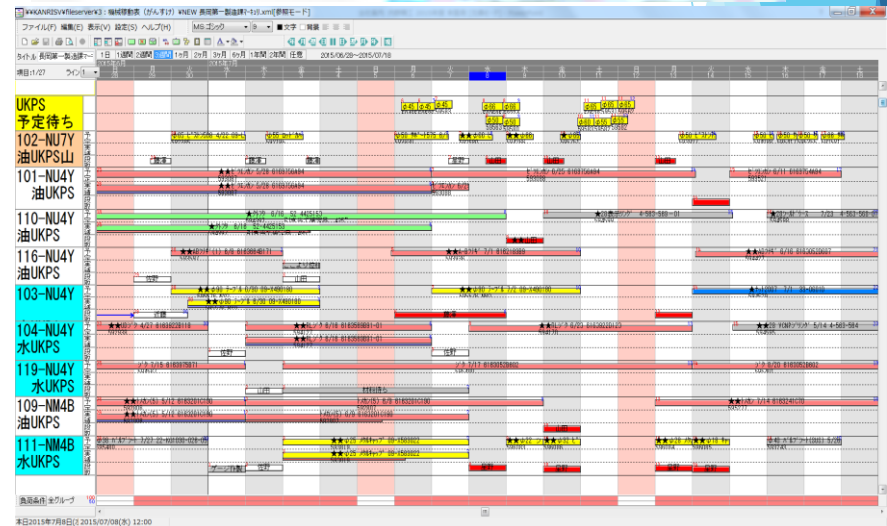
# CAD/CAM



# Production, Process Control & Sales Management System



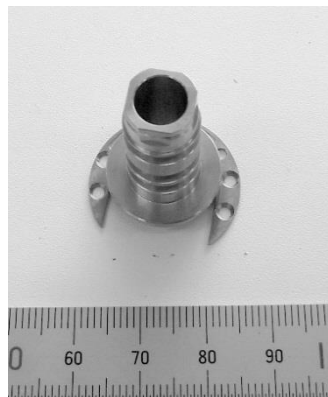
Traceability management based on order number from item acquisition to shipment is realized by our original “Production, Process Control & Sales Management system”



Each department manage Machine schedule by Gantt chart

# Products①

## 〈Stainless steel alloy〉

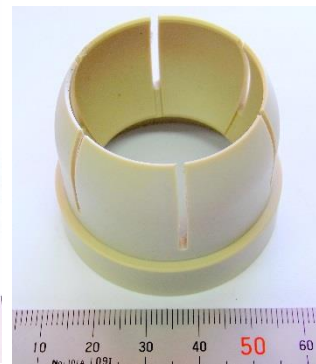
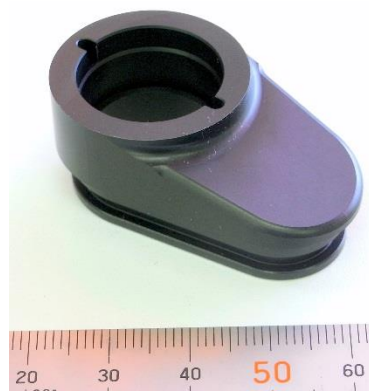
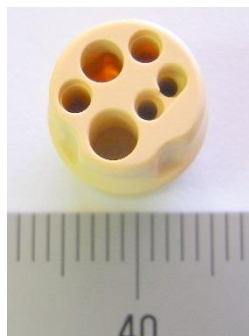


## 〈Titanium alloy〉

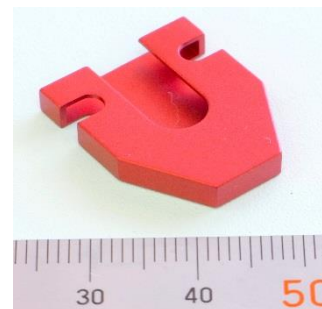
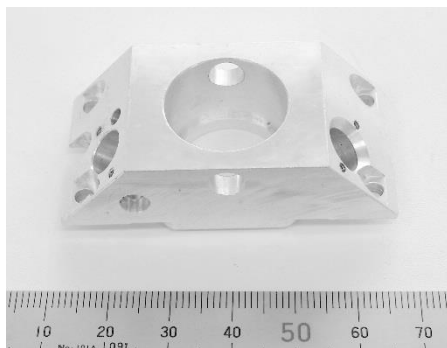


## Products②

〈Hard-to-cut resin〉



〈Aluminum, brass, special steel〉





## Items that can be handled by cooperating companies

- Various surface treatments

Alumite (black, color), Electroplating (nickel chrome, black chrome), Electroless Plating, Lubricating Coating, Black Dyeing, Chemical Grinding, Chemical Conversion Treatment, Raydent Treatment, Hino black . . . etc.

- Die-Cast (aluminum, magnesium), Lost Wax, Forged Products

- Quenching Tempering, Gas Nitrocarburizing Treatment, Carburizing Quenching, Salt Bath

- Gear Processing, Gun Drill Processing, Brazing

### **UCHINOSEIKO Co.,Ltd**

Head Office

3-27-9, Kita, Kunitachi-shi, Tokyo, 1860001, JAPAN

Tel 81-42-526-3311

Nagaoka Factory

50-5, Isurugi Minami-machi, Nagaoka-shi, Niigata, 9402117, JAPAN

URL : <http://www.uchinoseiko.co.jp/>

E-mail: [info@uchinoseiko.co.jp](mailto:info@uchinoseiko.co.jp)

**If you have any question, please contact us by email.**